

# BREAST TOMOSYNTHESIS CLINICAL CASE: ALBERT SCHWEITZER HOSPITAL IN DORDRECHT, NETHERLANDS

## Patient Information

These images are for a 73-year old patient coming in for a yearly follow-up mammography exam following a mastectomy in the right breast.

## Imaging Findings

A small spiculated malignancy of 5 mm diameter in the left breast could clearly be seen on the tomosynthesis image and not on the conventional 2D mammogram. An additional spot compression 2D view failed to show the malignancy. An additional targeted ultrasound examination found a poorly defined hypoechogenic mass.

## Diagnosis

This spiculated lesion seen in the tomosynthesis image was confirmed by biopsy to be an adenocarcinoma (ductal type).

## Conclusion

This case illustrates that tomosynthesis in addition to 2D has greater sensitivity than 2D alone in dense breast tissue.

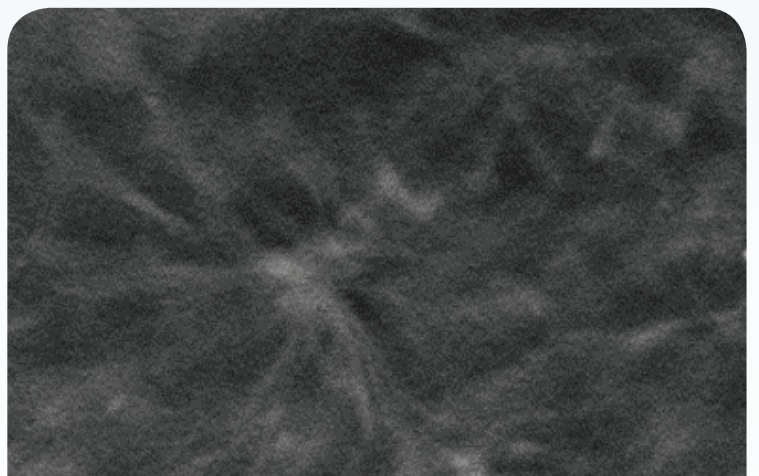
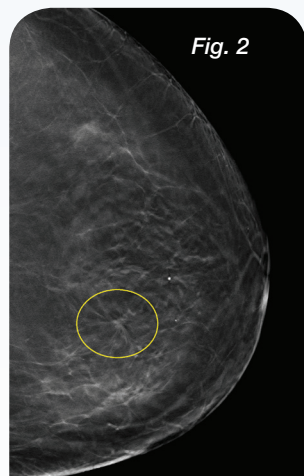
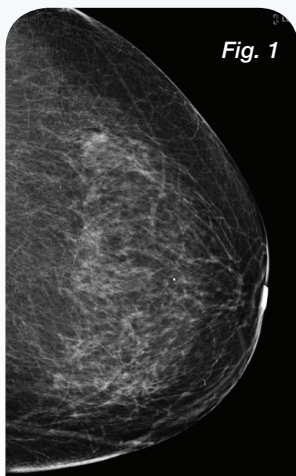


Figure 1. The 2D LCC image

Figure 2. The 3D image clearly shows a spiculated mass in the LCC view